

## See Why CDMG is the Premier Choice For Metal Buildings



**Customization**



**Cost Effective**

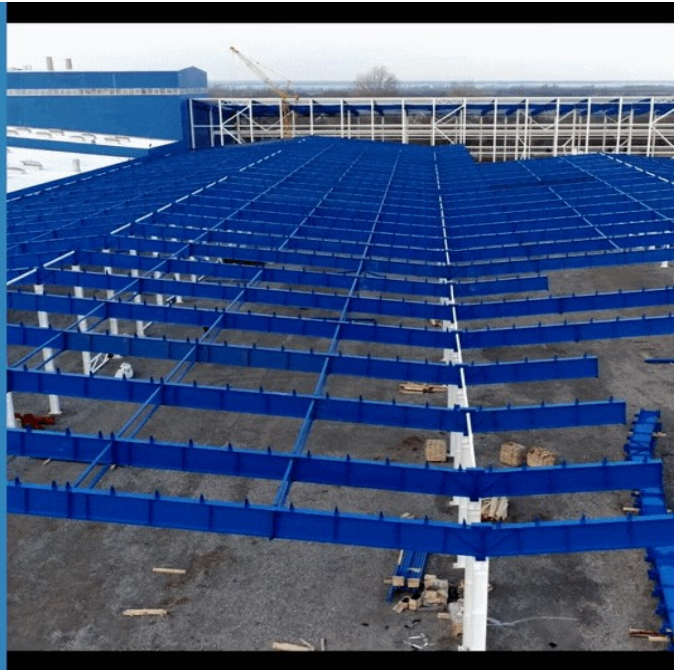


**Durability**



**Environmentally Friendly**

[Click Here For Your Free Quote](#)



# CDMG Metal Building Company Explains How Easy Steel Buildings Additions Are

*March 15, 2021*

Canonsburg, Pennsylvania - March 15, 2021 - PRESSADVANTAGE -

Based in Pennsylvania, CDMG is a global leader in the steel construction industry. The PA-based steel building erector explains how easy it is to expand a pre-engineered metal building. "Steel building additions are cost-effective and easy to implement," says Thomas Corry, metal building division manager. The leading Pennsylvania metal building erector states that all steel buildings are expandable, allowing a business to start small and upgrade as it grows.

To read the full article, click on the link: <https://www.cdmg.com/building-faqs/add-on-to-a-metal-building>

Pre-engineered metal buildings, states CDMG, are highly durable and can withstand the vagaries of weather, adding that budget-friendly steel buildings are the most reliable construction materials available. These are many of the reasons that metal buildings are perfect for aviation hangars, distribution warehouses, or recreational facilities. According to the top metal building construction company, steel is available in different color & roof designs and dimension possibilities.

CDMG uses top-grade Nucor steel, which is fire and pest resistant. The PA metal construction company emphasizes on location, land, and local considerations for considering expansion of a metal building. If the location is quite appealing, there is no harm in expanding the steel unit. Another factor on the CDMG list is the availability of land. The steel building erector asks, "Do you own enough land for your add-on, and if not, can you acquire the land you need? If you answer no to any of those questions, it will be difficult to expand your current business. But if you have the necessary land, a metal building expansion will be pretty straightforward."

The Pennsylvania steel building supplier stresses the importance of getting local building permits for addition or expansion from the local zoning and planning commission to ensure there are no restrictions for extensions.

The top metal builder says that expansion is a cost-effective way to make a building bigger. The higher the roofline, the wider the expansion of the lean-to and addition of more bays. "To open the bay and keep your space open, all you have to do is remove the wall panels and some girts." With the new roofing and end walls, the job is done.

CDMG explains the difference between adding length and adding width. The top PA steel building supplier notes that the new addition cannot be directly added to the original frame in a post and beam construction. "You have to start as an entirely new end wall that's placed right next to the end wall of your existing building."

CDMG explains how a building can be expanded by the addition of extra bays to the back, suggesting getting the job done by experts with experience in specialty framing techniques.

CDMG suggests removing or shoring up girts and purlins for buildings without an appropriate moment-resistant frame and adding a new spanning moment-resistant frame.

Those looking to expand their metal building with the best PA metal building supplier should contact CDMG via their website. CDMG leverages top-grade, recyclable steel and construction steel building components ready to assemble for quick erection of the prefabricated steel building at the client's site.

[https://www.youtube.com/embed/-Rte\\_S6tm0Q](https://www.youtube.com/embed/-Rte_S6tm0Q)

###

For more information about CDMG Metal Buildings, contact the company here: CDMG Metal

BuildingsThomas M. Corry(724) 873-4700info@cdmg.comSouthpointe Industrial Park150 Technology DriveCanonsburg, PA 15317

```
{
  "@context": "http://schema.org",
  "@type": "Organization",
  "sameAs": [
    "https://www.google.com/maps/place/CDMG/@40.281041,-80.1729956,17z/data=!3m1!4b1!4m5!3m4!1s0x88345411e6c7b983:0xa602fee65f5ab56a!8m2!3d40.2810369!4d-80.1708069",
    "https://www.linkedin.com/company/continental-design-and-management-group/",
    "https://www.mapquest.com/us/pennsylvania/cdmg-350855393"
  ],
  "alternateName": "Continental Design & Management Group",
  "contactPoint": {
    "@type": "ContactPoint",
    "name": "Contact Page",
    "@id": "https://www.cdmg.com/contact-cdmg"
  },
  "email": "info@cdmg.com",
  "foundingDate": "1991-02-12T00:00:00+0000",
  "image": "https://www.cdmg.com/hubfs/CDMG_January2019/Images/content-1-4.jpg",
  "description": "Established in 1991, CDMG is one of the nation's foremost engineering companies serving industrial markets and customers. From its office in Southpointe (20 miles south of Pittsburgh), CDMG features a staff of experienced multi-discipline engineers and project management professionals. As a wholly owned subsidiary of the STEVENS family of companies, CDMG provides the resources to design and manage projects with a focus on efficient operations. Our goal is to always deliver projects on time, within budget, and to the highest level of quality.",
  "areaServed": "https://en.wikipedia.org/wiki/United_States",
  "logo": "https://www.cdmg.com/hubfs/CDMG_January2019/Images/cropped-CDMG-logo.png",
  "additionalType": "http://www.productontology.org/doc/Industrial_engineering",
  "address": {
    "@type": "PostalAddress",
    "addressCountry": "USA",
    "addressLocality": "Canonsburg",
    "addressRegion": "PA",
    "postalCode": "15317",
    "streetAddress": "150 Technology Drive"
  },
  "brand": "https://www.cdmg.com/",
}
```

```
"foundingLocation": "https://en.wikipedia.org/wiki/Canonsburg,_Pennsylvania",
"url": "https://www.cdmg.com/",
"telephone": "+1 (724) 873-4700",
"memberOf": [
  "https://www.mbma.com/",
  "https://www.iasonline.org/"
],
"name": "CDMG",
"@id": "https://www.cdmg.com/"
}
```

```
[
  {
    "@context": "http://schema.org",
    "@type": "Answer",
    "text": "If you are fortunate enough to need an addition to support your growing business, building a metal addition onto your existing building is easier than it seems. Steel building components come ready to assemble for quick erection. Not only are steel buildings cost-effective and quick to erect, but they are also easy to expand. Simple and expandable framing allows for growth, so your business never has to feel stifled. Easy expansion is just one of the many benefits of owning a Steel Building made by CDMG. To see how we can help you get started on your steel building expansion",
```

```
    "name": "How Easy Is It To Add On To A Metal Building? Answer",
```

```
    "@id": "https://www.cdmg.com/building-faqs/add-on-to-a-metal-building#Answer3"
```

```
  },
```

```
  {
```

```
    "@context": "http://schema.org",
```

```
    "@type": "Answer",
```

```
    "text": "You already have a metal building, so you already know how beneficial metal buildings can be for your business. But a little reminder never hurts. Every metal building project is designed and constructed to last a lifetime. Pre-engineered metal buildings can withstand anything mother nature throws its way because of their durability. But even though they are so durable, they are still very budget-friendly. Steel is very inexpensive in the long run while being one of the most reliable building materials available. And the steel building for your business doesn't have to look like an old barn. There are many color options, roof designs, and dimension possibilities available for your business. Metal buildings are also fire and pest resistant, and they are also resistant to mold and mildew. And best of all, all of these benefits will apply to your metal building addition.",
```

```
    "name": "What Are The Benefits of Metal Buildings? Answer",
```

```
    "@id": "https://www.cdmg.com/building-faqs/add-on-to-a-metal-building#Answer4"
```

```
},
{
  "@context": "http://schema.org",
  "@type": "BlogPosting",
  "timeRequired": "P0Y0M0DT0H7M0S",
  "mentions": [
    "https://en.wikipedia.org/wiki/Cost-effectiveness_analysis",
    "https://en.wikipedia.org/wiki/Lean-to",
    "https://en.wikipedia.org/wiki/Pre-engineered_building",
    "https://en.wikipedia.org/wiki/Prefabricated",
    "https://en.wikipedia.org/wiki/Prefabricated_buildings",
    "https://en.wikipedia.org/wiki/Steel",
    "https://en.wikipedia.org/wiki/Steel_building",
    "https://en.wikipedia.org/wiki/Steel_frame",
    "https://en.wikipedia.org/wiki/Structure"
  ],
  "about": "https://en.wikipedia.org/wiki/Pre-engineered_building",
  "alternativeHeadline": "Is it easy to add on to my pre-engineered metal building?",
  "keywords": [
    "How Easy Is It To Add On To A Metal Building?",
    "add a second floor to a metal building",
    "how to add a lean to ",
    "how to add on to an existing building",
    "industrial steel building",
    "pre-engineered metal building",
    "prefabricated metal building"
  ],
  "sameAs": "https://www.youtube.com/watch?v=-Rte_S6tm0Q",
  "dateModified": "2021-03-10T09:58:00-05:00",
  "headline": "How Easy Is It To Add On To A Metal Building?",
  "name": "How Easy Is It To Add On To A Metal Building?",
  "wordCount": 1057,
  "image":
    "https://www.cdmg.com/hs-fs/hubfs/Best%20Steel%20Building%20Supplier.jpg?width=1200&name=Best%20Steel%20Building%20Supplier.jpg",
  "description": "Pre-engineered metal buildings are ideal for expansion. From adding a second floor to your metal building, or if you wonder how do you add a lean to on an existing metal building, prefabricated steel buildings allows for easy expansion. If you're wondering how to add on to an existing building CDMG
```

Metal Buildings can help you. Contact us today for your free quote. ",

"audience": "business owners wanting to expand their business",

"url": "<https://www.cdmg.com/building-faqs/add-on-to-a-metal-building>",

"articleBody": "You have a metal building that isn't quite big enough anymore. You need more space, but can you add on to a metal building? Steel building additions are cost-effective and easy to implement. Almost any steel building can be expanded, creating added space for expanded business, storage, or living needs. There are several ways you can expand your metal building, so there is sure to be a way that meets your needs. With steel, you can start with a smaller structure to fit your budget and current needs and upgrade your building along with your business. In the article below, we will look at how easy it is to add to your metal building. [Table of Contents](#) [What Are The Benefits of Metal Buildings?](#) [What To Know Before You Expand](#) [Location](#) [Land](#) [Local Considerations](#) [How To Expand Your Metal Building](#) [Add Width](#) [Add Length](#) [Add Height](#) [Expand Your Metal Building With CDMG](#) [What Are The Benefits of Metal Buildings?](#) You already have a metal building, so you already know how beneficial metal buildings can be for your business. But a little reminder never hurts. Every metal building project is designed and constructed to last a lifetime. Pre-engineered metal buildings can withstand anything mother nature throws its way because of their durability. But even though they are so durable, they are still very budget-friendly. Steel is very inexpensive in the long run while being one of the most reliable building materials available. And the steel building for your business doesn't have to look like an old barn. There are many color options, roof designs, and dimension possibilities available for your business. Metal buildings are also fire and pest resistant, and they are also resistant to mold and mildew. And best of all, all of these benefits will apply to your metal building addition. [-back to top](#) [What to Know Before You Expand](#) Before you expand with a metal building add-on, there are a few things you should consider. The main things are your location, land, and local considerations. [-back to top](#) [Location](#) Before you go ahead with any metal building additions, you need to decide whether your current location is ideal for your growing business. If you don't like the traffic, distance from amenities, or the neighborhood around your current building, you might want to skip the addition and move to a new location. But if you like your location, adding onto your pre-engineered metal building won't be an arduous process. [-back to top](#) [Land](#) You have to keep in mind that you need the land available for any metal building extensions you plan on adding. Do you own enough land for your add-on, and if not, can you acquire the land you need? If you answer no to any of those questions, it will be difficult to expand your current business. But if you have the necessary land, a metal building expansion will be pretty straightforward. [-back to top](#) [Local Considerations](#) You also can't forget about the local building permits you'll need for your addition. You also need to check in with your local zoning and planning commission before you build your add-on. You did these same things when you built your original metal building, so you will just need to repeat the process here. Before breaking ground on your add-on, make sure the HOA or local government doesn't have any restrictions or requirements for building extensions. [-back to top](#) [How To Expand Your Metal Building](#) [Add Width](#) Making your current building wider with a lean-to is one of the most cost-effective ways to make your building bigger. The higher your current building's roofline, the wider your lean-to can be, and the more bays you can add. A lean-to will extend your roofline to the side with a new frame attaching to your original frame.

Your original walls can either stay, and you can add doors, or the walls can be removed to keep the space open. To open the bay and keep your space open, all you have to do is remove the wall panels and some girts. After that, add new roofing and end panels, and you're finished. And the best part is that your old wall panels can be reused elsewhere. -back to top

**Add Length** Adding length is just as easy as adding width, but the process is a bit different. If you have post and beam construction, you can't attach your addition directly to the original frame like you would with a lean-to. You have to start as an entirely new end wall that's placed right next to the end wall of your existing building. Otherwise, as with lean-tos, the new addition's secondary frame can be attached to the original primary frame when you are ready to expand. It's possible to make your building as long as you need, adding extra bays to the back as far as you have the foundation. -back to top

**Add Height** Adding height requires specialty framing techniques from the start. If your original building doesn't have the appropriate moment-resistant frame, girts and purlins will have to be shored up or removed, and a new spanning moment-resistant frame must be added before you can add the bays and end walls for your extension. You could also build a new frame around your original building with the new frame footed into the foundation outside of the old walls. You'll just have to have a wide enough foundation to do so. -back to top

**Expand Your Metal Building With CDMG** If you are fortunate enough to need an addition to support your growing business, building a metal addition onto your existing building is easier than it seems. Steel building components come ready to assemble for quick erection. Not only are steel buildings cost-effective and quick to erect, but they are also easy to expand. Simple and expandable framing allows for growth, so your business never has to feel stifled. Easy expansion is just one of the many benefits of owning a Steel Building made by CDMG. To see how we can help you get started on your steel building expansion, click on the link below. Check out our other pre-engineered metal building articles: [Can My Metal Building Have Utilities?](#) [The Difference In Prefabricated Metal Buildings For Residential and Industrial Buildings](#) [Can Pre-engineered Metal Buildings Be Used For Sports Facilities?](#)",

"datePublished": "2021-03-10T09:57:00-05:00",

"inLanguage": "English",

"subjectOf": {

"@type": "FAQPage",

"name": "How Easy is it to expand a metal building? FAQ",

"mainEntity": [

{

"@type": "Question",

"name": "How Easy Is It To Add On To A Metal Building?",

"acceptedAnswer": {

"@id": "https://www.cdmg.com/building-faqs/add-on-to-a-metal-building#Answer3"

},

"@id": "https://www.cdmg.com/building-faqs/add-on-to-a-metal-building#Question3"

},

{

```
"@type": "Question",
"name": "What Are The Benefits of Metal Buildings?",
"acceptedAnswer": {
  "@id": "https://www.cdmg.com/building-faqs/add-on-to-a-metal-building#Answer4"
},
"@id": "https://www.cdmg.com/building-faqs/add-on-to-a-metal-building#Question4"
}
],
"@id": "https://www.cdmg.com/building-faqs/add-on-to-a-metal-building#FAQPage"
},
"mainEntityOfPage": "https://www.cdmg.com/building-faqs/add-on-to-a-metal-building",
"video": {
  "@type": "VideoObject",
  "name": "How easy is it to expand a metal building? video",
  "description": "You have a metal building that isn't quite big enough anymore. You need more space, but can you add on to a metal building? Steel building additions are cost-effective and easy to implement. Almost any steel building can be expanded, creating added space for expanded business, storage, or living needs. There are several ways you can expand your metal building, so there is sure to be a way that meets your needs. With steel, you can start with a smaller structure to fit your budget and current needs and upgrade your building along with your business. In the article below, we will look at how easy it is to add to your metal building.",
  "duration": "P0Y0M0DT0H2M57S",
  "contentUrl": "https://www.youtube.com/watch?v=-Rte_S6tm0Q",
  "thumbnailUrl":
"https://www.cdmg.com/hs-fs/hubfs/Best%20Steel%20Building%20Supplier.jpg?width=1200&name=Best%20Steel%20Building%20Supplier.jpg",
  "uploadDate": "2021-03-10",
  "embedUrl": "https://www.youtube.com/embed/-Rte_S6tm0Q",
  "@id": "https://www.cdmg.com/building-faqs/add-on-to-a-metal-building#VideoObject"
},
"publisher": {
  "@type": "Organization",
  "address": {
    "@type": "PostalAddress",
    "addressCountry": "USA",
    "addressLocality": "Canonsburg",
    "addressRegion": "PA",
    "postalCode": "15317",
```

"streetAddress": "150 Technology Drive",

"@id": "https://www.cdmg.com/#PostalAddress254861d4-de33-413e-9160-4895f0054ed0"

},

"url": "https://www.cdmg.com/",

"alternateName": "Continental Design & Management Group",

"additionalType": "http://www.productontology.org/doc/Industrial\_engineering",

"image": "https://www.cdmg.com/hubfs/CDMG\_January2019/Images/content-1-4.jpg",

"name": "CDMG",

"description": "Established in 1991, CDMG is one of the nation's foremost engineering companies serving industrial markets and customers. From its office in Southpointe (20 miles south of Pittsburgh), CDMG features a staff of experienced multi-discipline engineers and project management professionals. As a wholly owned subsidiary of the STEVENS family of companies, CDMG provides the resources to design and manage projects with a focus on efficient operations. Our goal is to always deliver projects on time, within budget, and to the highest level of quality.",

"logo": "https://www.cdmg.com/hubfs/CDMG\_January2019/Images/cropped-CDMG-logo.png",

"email": "info@cdmg.com",

"telephone": "+1 (724) 873-4700",

"sameAs": [

"https://cdmgcannonsburg.s3.us-east-2.amazonaws.com/index.html",

"https://www.google.com/maps/place/CDMG/@40.281041,-80.1729956,17z/data=!3m1!4b1!4m5!3m4!1s0x88345411e6c7b983:0xa602fee65f5ab56a!8m2!3d40.2810369!4d-80.1708069",

"https://www.linkedin.com/company/continental-design-and-management-group/",

"https://www.mapquest.com/us/pennsylvania/cdmg-350855393"

],

"brand": {

"@id": "https://www.cdmg.com/"

},

"contactPoint": "https://www.cdmg.com/contact-cdmg",

"foundingLocation": "https://en.wikipedia.org/wiki/Canonsburg,\_Pennsylvania",

"foundingDate": "1991-02-12T00:00:00+0000",

"areaServed": "https://en.wikipedia.org/wiki/United\_States",

"memberOf": [

"https://www.iasonline.org/",

"https://www.mbma.com/"

],

"@id": "https://www.cdmg.com/"

},

```
"author": {
  "@id": "https://www.cdmg.com/"
},
"@id": "https://www.cdmg.com/building-faqs/add-on-to-a-metal-building#BlogPosting"
},
{
"@context": "http://schema.org",
"@type": "Question",
"name": "How Easy Is It To Add On To A Metal Building?",
"@id": "https://www.cdmg.com/building-faqs/add-on-to-a-metal-building#Question"
},
{
"@context": "http://schema.org",
"@type": "Question",
"name": "What Are The Benefits of Metal Buildings?",
"@id": "https://www.cdmg.com/building-faqs/add-on-to-a-metal-building#Question1"
},
{
"@context": "http://schema.org",
"@type": "Question",
"name": "How To Expand Your Metal Building?",
"@id": "https://www.cdmg.com/building-faqs/add-on-to-a-metal-building#Question2"
},
{
"@context": "http://schema.org",
"@type": "WebPage",
"isPartOf": {
  "@type": "WebSite",
  "name": "CDMG",
  "url": "https://www.cdmg.com/engineering-metal-building-systems-company",
  "@id": "https://www.cdmg.com/engineering-metal-building-systems-company#WebSite"
},
"about": "https://en.wikipedia.org/wiki/Pre-engineered_building",
"headline": "How Easy Is It To Add On To A Metal Building?",
"name": "How Easy Is It To Add On To A Metal Building?",
"url": "https://www.cdmg.com/building-faqs/add-on-to-a-metal-building",
"alternativeHeadline": "Can I expand my pre-engineered metal building?",
"@id": "https://www.cdmg.com/building-faqs/add-on-to-a-metal-building#WebPage"
```

}  
]

## **CDMG Metal Buildings**

*From our Southpointe office in Canonsburg, Pennsylvania (20 miles south of Pittsburgh), CDMG serves the engineering and project/construction management needs of customers nationwide.*

Website: <https://www.cdmg.com/>

Email: [info@cdmg.com](mailto:info@cdmg.com)

Phone: (724) 873-4700

