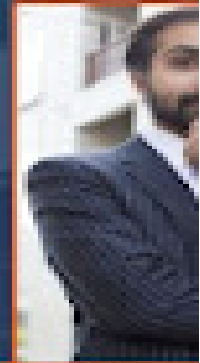


The Sharma Law Firm
are Personal Injury Lawyers
7 Pulaski Hwy #5
Bear DE 19701
(302) 205-3160



Aman K.

[sharmalaw.com/bear-de-personal-injury-at](http://www.sharmalaw.com/bear-de-personal-injury-at)

The Sharma Law Firm Expands Pedestrian Accident Representation

April 06, 2026

Bear, DE - April 06, 2026 - PRESSADVANTAGE -

The Sharma Law Firm has announced an expansion of its legal service line to include pedestrian accident representation, reflecting recent developments in roadway safety concerns and injury patterns. The update applies to its operations at 757 Pulaski Hwy # 5, Bear, DE, and is intended to address factors contributing to pedestrian-related incidents, including distracted driving and impaired mobility.

"Pedestrian accident cases involve specific legal considerations related to roadway conduct and shared responsibility, and this service expansion reflects an effort to address those factors within existing legal frameworks," said Aman Sharma, attorney at The Sharma Law Firm.

The Sharma Law Firm is a legal practice that provides representation in personal injury matters, including cases involving motor vehicle incidents and liability disputes. The firm operates from its Bear, Delaware office and handles matters that require evaluation of negligence, insurance coverage, and statutory compliance. Its expansion into pedestrian accident lawyer representation reflects a response to documented patterns in

accident causation and injury claims.

Pedestrian accidents in Delaware have been associated with several contributing conditions that affect both drivers and individuals on foot. Distracted driving, including the use of mobile devices while operating a vehicle, has been identified as a recurring factor that reduces driver attention to surrounding conditions. Impaired walking, which may result from alcohol or substance use, has also been observed to affect coordination and decision-making among pedestrians in roadway environments.

Reckless behavior, including failure to observe traffic signals or speed regulations, contributes to increased risk in shared traffic spaces. Impatience among both drivers and pedestrians may lead to unsafe crossing decisions or abrupt vehicle maneuvers, which can elevate the likelihood of collisions. Poor visibility, particularly during low-light conditions, further complicates interactions between vehicles and pedestrians and can affect response times.

Legal claims arising from pedestrian accidents often involve analysis of multiple factors, including right-of-way rules, comparative negligence, and available evidence such as witness statements and traffic data. The Sharma Law Firm evaluates these elements within the context of Delaware statutes and civil procedures. This includes reviewing documentation related to injuries, medical care, and accident reports to determine the structure of a claim.

The firm's approach to pedestrian accident representation includes case assessment, documentation review, and coordination with relevant parties such as insurers and, where applicable, opposing counsel. These processes are conducted in accordance with procedural requirements governing personal injury cases. The expansion of services incorporates pedestrian-specific considerations, such as crosswalk use, sidewalk conditions, and visibility factors at the time of the incident.

The Sharma Law Firm maintains information resources related to personal injury law, including pedestrian accident claims and liability standards. These materials outline general legal processes and provide context for individuals seeking to understand how such claims are evaluated under Delaware law. The firm indicates that updates to its service offerings will continue to be reflected in its published materials.

Pedestrian accident litigation may involve consultation with medical professionals, accident reconstruction specialists, and insurance representatives to establish factual records and liability determinations.

Pedestrian accident representation may involve both settlement negotiations and, in some cases, litigation proceedings. Courts may review whether parties involved adhered to traffic laws and whether reasonable

care was exercised under the circumstances. Outcomes in such cases can depend on the availability and interpretation of evidence, as well as statutory provisions governing damages and liability.

###

For more information about The Sharma Law Firm - Bear, contact the company here: The Sharma Law Firm - Bear
The Sharma Law Firm (302) 205-3160 info@amansharmalaw.com 757 Pulaski Hwy #5 Bear DE 19701

The Sharma Law Firm - Bear

The Sharma Law Firm LLC in Bear, Delaware is a licensed attorney that have a reputation throughout the state for being aggressive in fighting for the rights of our clients.

Website: <https://amansharmalaw.com/bear-de-christiana-personal-injury-lawyer/>

Email: info@amansharmalaw.com

Phone: (302) 205-3160

